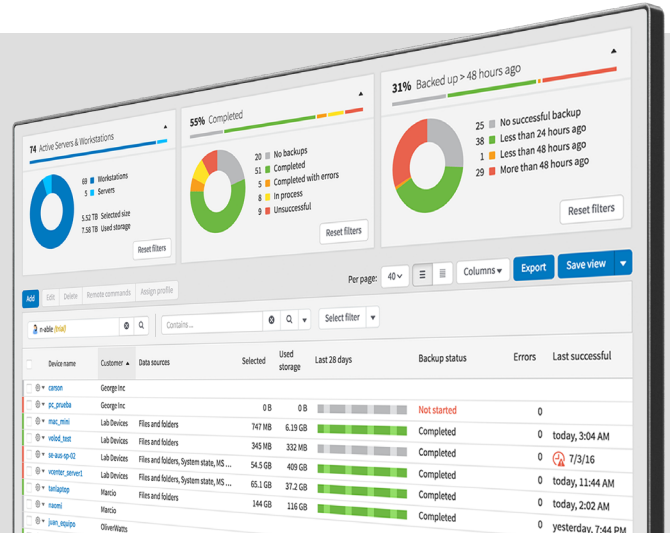


N-able Backup

Cloud-first backup, without the cost and complexity

N-able™ Backup is designed to provide a streamlined, cloud-first data protection service for physical and virtual servers, workstations, business documents, and Microsoft 365®* data in one web-based dashboard. Backup can help reduce the cost and complexity of data protection—without sacrificing speed or reliability. Storage in our global private cloud is included.



Flexible recovery options

- Get multiple recovery options from a single product, with no extra charges for different recovery methods.
- Leverage fast file- and folder-level recovery and full system recovery with bare-metal restore or virtual disaster recovery.
- Create a standby server via our continuous recovery option.
- Recover at LAN speed via the LocalSpeedVault option if needed.
- Test and verify backup recoverability on an automated schedule with recovery testing.

Built for the cloud

- Backing up to the cloud isn't an afterthought with N-able Backup; it was built for that.
- TrueDelta deduplication, compression, and WAN optimization help make daily backups fast by sending only changed bytes.
- Cloud storage (including archiving) is included at no extra charge in data centers located worldwide.
- AES 256-bit encryption protects backup files in transit and at rest.

Device properties

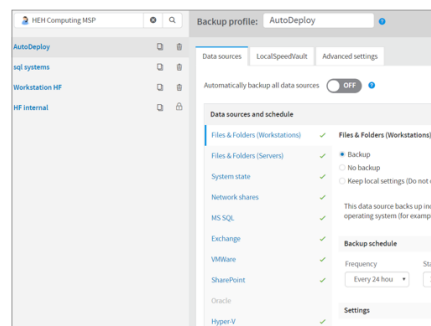
w2012r2-02_gjrlq

Overview | History | Statistics | Errors | Audit | Processed files | Removed files | VDR session verification

Last 28 days

Start	Duration	Data source	Action	Status	Errors	Selected size	Selected files
11/27/18, 12:30 PM	1m 46s	System state	Backup	Completed	0	13.4 GB	118406
11/27/18, 12:33 PM	6m 20s	Files and folders	Backup	Completed	0	20 GB	113592
11/27/18, 6:36 AM	1m 31s	System state	Backup	Completed	0	13.4 GB	118406
11/27/18, 6:33 AM	3m 29s	Files and folders	Backup	Completed	0	20 GB	113112
11/27/18, 12:36 AM	1m 14s	System state	Backup	Completed	0	13.4 GB	118406
11/27/18, 12:33 AM	3m 31s	Files and folders	Backup	Completed	0	20 GB	112639
11/26/18, 6:38 PM	1m 15s	System state	Backup	Completed	0	13.4 GB	118406

TrueDelta technology sends a fraction of the data over the WAN during daily backups.



Define profiles for device types for auto-deployment to help save time and increase consistency.



No hardware hassles

- N-able Backup is a SaaS application—no need to install on or maintain a local application server.
- No physical appliance required, which helps save you time and money.
- No need to buy, provision, or manage local data storage for your backups. Storage in our private cloud is included.
- Keep an optional local copy of your data using an existing network share or other hardware with LocalSpeedVault.

Efficiency and ease of use

- Simplify backup management and spend less time on routine tasks.
- Manage server, workstation, document, and Microsoft 365* backups for multiple locations or customers from a single dashboard.
- Automate backup deployment with device profiles to help provide consistent configurations.
- Manage by exception with customizable views and reporting.

Features at a glance

End-to-end security

- **AES 256-bit encryption** is used to help secure files that remain encrypted in transit and at rest.
- **Create your own private key** or have one generated for you during deployment when using the standalone version. Integrated N-central Backup and RMM Managed Online Backup offer passphrase encryption.
- **ISO-certified data centers** are located worldwide, with additional certifications by location.
- **Role-level access** provided in the standalone edition of N-able Backup lets you grant limited access to backups as needed. The N-central and RMM integrated versions use each platform's access controls.

Truedelta technology

- **Byte-level change tracking** between backups helps ensure only changed data gets sent over the WAN.
- **Proprietary deduplication and compression technology** means daily backups are a fraction of the selected size.
- **WAN optimization** helps minimize bandwidth usage; bandwidth throttling is available during business hours for slow network connections.
- **Restore only what has changed** for efficient recovery.

* Backup for Microsoft 365 includes Exchange™, OneDrive®, and SharePoint data.



Microsoft 365 data protection*

(standalone and integrated into N-central)

- **Recovery** of deleted items helps you keep control of your customers' data in Microsoft 365.
- **Manage Microsoft 365 backups from the same dashboard** as server and workstation backups.
- **Up to seven years' data retention** to help your customers meet regulatory requirements.
- **Storage in our global private cloud** is included. Fair-use policies apply.*

Data centers around the world

- **Backup storage in our private cloud** is included in your price.
- **More than 30 data centers** to choose from, located across four continents.
- **ISO 27001, ISO 9001**, and other certifications depending on your chosen data center.
- **Using one vendor** for your backup software and cloud storage simplifies billing and support.

Country	HIPAA	ISO27001	ISO9001	NIST 800-53	PCI DSS	SOC 1 TYPE II	SOC 2 TYPE II
Australia		X			X	X	X
Belgium		X					
Brazil		X	X		X	X	X
Denmark		X			X	X	X
France		X	X		X	X	X
Germany		X	X		X	X	X
Italy		X	X		X	X	X
Netherlands		X	X		X	X	X
Norway		X	X				
Portugal		X	X		X	X	X
S. Africa			X				
Spain		X	X		X		
Sweden		X	X				
Switzerland		X	X		X	X	X
UK		X	X		X	X	X
Canada	X	X		X	X	X	X
USA	X	X		X	X	X	X

** Other location-specific certifications exist, above table contains most requested

Backup data is stored in worldwide data centers built for security and regulatory compliance.

* Backup for Microsoft 365 includes Exchange™, OneDrive®, and SharePoint data.

*Fair use policy includes up to 1TB of Microsoft 365 data per unique user.

Supported operating systems

Windows®	7, 8, 8.1 and 10
Windows Server®	2008 SP2, 2008 R2, SBS 2011, 2012, 2012 R2, 2016 (limited), Windows Server 2019 (limited)
macOS®	10.10 Yosemite 10.11 El Capitan 10.12 Sierra 10.13 High Sierra 10.14 Mojave 10.15 Catalina
GNU/Linux®	CentOS 5, 6, 7 Debian 5, 6, 7, 8 OpenSUSE 11, 12

Data sources for backup

The Backup Manager handles individual files and directories as well as complex systems, such as:

- Microsoft SQL Server®
- VMware®
- Microsoft Hyper-V®
- Microsoft Exchange™
- Oracle®
- MySQL®

You can also back up and recover the configuration of your **operating system** (the “System State” data source) and [Microsoft 365](#). The N-central integrated version also supports Microsoft 365 data protection.

Please view [data sources documentation](#) for system compatibility details.

* Backup for Microsoft 365 includes Exchange™, OneDrive®, and SharePoint data.

Additional features

Available on all supported operating systems

- **Multilingual support.** You can use the Backup Manager in any of these seven languages: English, Dutch, Russian, German, Spanish, French, or Portuguese.
- **Optional custom branding.** When using the standalone edition, you can brand the Backup Manager for your end users, removing references to N-able. Use a custom name, logo, color scheme, and icons.
- **Remote management.** You can send remote commands to the Backup Managers on your end users' devices.
- **Proxy connections.** The Backup Manager can work from behind a proxy server.
- **Email reports.** Receive email updates on status or recent backup and recovery sessions. This action can be done by an end user in the Backup Manager or remotely by a service provider or a system administrator.
- **Bandwidth usage control.** Help ensure your bandwidth usage never exceeds a specified limit.

Management Console (Web) Backup Manager	https://backup.management/ Client-side backup application available in English, Dutch, Russian, German, Spanish, French, Portuguese, and Norwegian
Virtual Drive	Optionally installed with the Backup Manager, this allows self-service access to backed-up data via a local file browser
Recovery Console	Multi-instance recovery tool for setting up proactive or on-demand data recovery from servers and workstations to any location
Bare-Metal Recovery	Create bootable USB or CD media to recover your system directly to bare hardware without a prior OS installation
Server Tool	Self-service tool for managing seed uploads or downloads from almost any location
Storage Node Installer	Optional installer for a self-hosted storage node



“Simple to use, enterprise-class features, very fair on the storage limits, and no gimmicks. 24/7 support. Above all, I saved a client’s burning building with this backup service. You can schedule backups nightly, twice a day, or down to every hour if you choose”

- Jeff Olejnik
Newport Solutions

“It’s crazy how little data is sent in daily backups using N-able [Backup]. We’re backing up GBs of data, yet by using the LocalSpeedVault and TrueDelta, we’re only transferring a couple of hundred MBs. Backups that used to take eight hours are now complete in ten minutes.”

- Kyle Orr
Orr Systems

“The cloud management console includes great monitoring and alerting capabilities for my entire customer base. Very knowledgeable 24/7 support. Proven to have easily recovered clients from ransomware attacks”

- Mark Chesher
The Data Vault

Try it free

30 days, full version

© 2021 N-able Solutions ULC and N-able Technologies Ltd. All rights reserved.

The N-able trademarks, service marks, and logos are the exclusive property of N-able Solutions ULC and N-able Technologies Ltd. All other trademarks are the property of their respective owners.

This document is provided for informational purposes only and should not be relied upon as legal advice. N-able makes no warranty, express or implied, or assumes any legal liability or responsibility for the information contained herein, including for the accuracy, completeness, or usefulness of any information contained herein.

