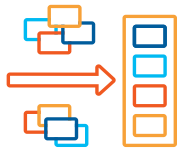


## WHAT'S NEW?

New features and functionality in v7.0



### Augmented Inline Deduplication

Massive Storage Savings by cutting down excess data transfer



### Boot from Backup

Instantly boot any VM version from the backup location.



### Windows Server 2016 Support

Altaro VM Backup now supports the great new features in Server 2016.

## Augmented Inline Deduplication

Augmented inline deduplication across VMs delivers faster backups and restores on local and offsite locations. By making sure that only new data is transferred to the backup or offsite location, this augmented inline deduplication technology solves a common problem found in conventional backup solutions, which deduplicate data after the transfer process.

with **Augmented Inline Deduplication**  
smallest backup size

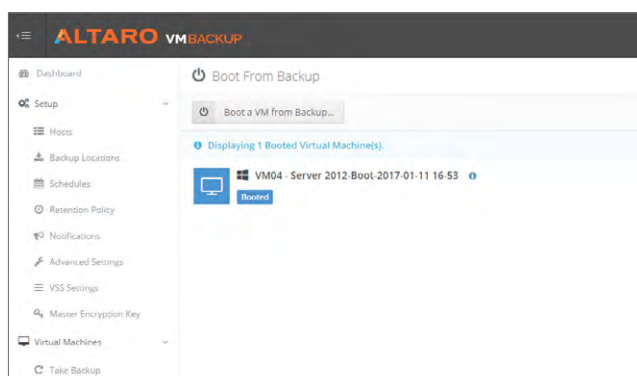
**Altaro: 39GB**

Comp 1: 62.6GB

Comp 2: 59.2GB

Comp 3: 60.1GB

*Smaller is better!*



## Boot from Backup

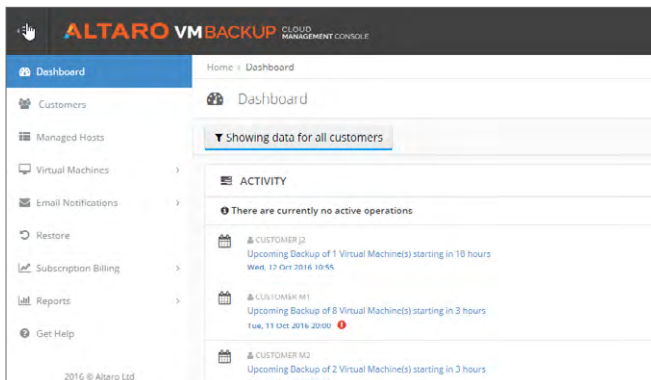
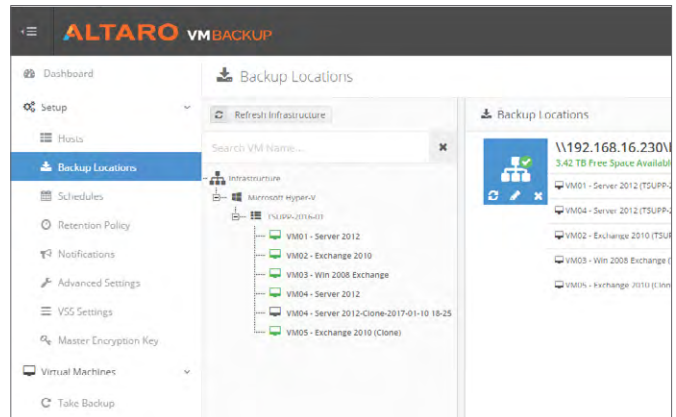
Boot from Backup lets users boot any VM version from the backup location instantly, without affecting its integrity. The system will continue working normally should disaster strike – with minimal downtime and no loss of changes – while the VM is restored to the Hypervisor in the background. A simple VM reboot completes the recovery process.

## New Compression Algorithm

Backup VM V7 uses faster compression algorithms that leverage processors' multithreading and arithmetic abilities, giving a boost to backup speed and drastically lowering the CPU requirements of the backup process.

## New look for Backup Server

A completely redeveloped Backup Server, with a brand-new look, is the best tool around to manage your offsite backups.



## Monitor and manage all your backups with one tool



VM Backup V7 will soon include the new and ground-breaking Cloud Management Console (CMC), which will allow end-users to monitor and manage remotely all their backup installations using a single tool that can be accessed from any web browser. No need for VPN or to be on-site.

The CMC dashboard gives users an overview of backups, off-site copy and verification health information, including any disconnected installations, skipped operation schedules, and failed backups. Users can initiate and restore backups, as well as monitor progress remotely.

In the next release of V7 it will also be possible to push upgrades, backup configurations, and license keys directly from the CMC to multiple backup installations.



Hassle-free and effective



Unbeatable value



Outstanding Support



www.altaro.com sales@altaro.com  
Tel: +1 (919) 251 6279



Authorized Partner